

Worklist: 1494

<u>LAB CASE</u>	<u>ITEM</u>	<u>TASK ID</u>	<u>DESCRIPTION</u>
C2017-0036	1	74576	AM 3 Urine Carboxy-THC
C2017-0040	1	74581	AM 3 Urine Carboxy-THC
C2017-0055	1	74580	AM 3 Urine Carboxy-THC
C2017-0071	1	74579	AM 3 Urine Carboxy-THC
C2017-0091	1	74578	AM 3 Urine Carboxy-THC
C2017-0092	1	74577	AM 3 Urine Carboxy-THC



Area Percent Report

Data Path : D:\DATA\2017\1-18-17 cTHC\
 Data File : 02201001.D
 Acq On : 18 Jan 2017 12:40
 Operator : Instrument 65198 - Tox
 Sample : negative control
 Misc : lot 121616; am 3
 ALS Vial : 22 Sample Multiplier: 1

Integration Parameters: autoint1.e
 Integrator: ChemStation

Method : D:\DATA\2016\852016a ta\psilocyn .D\TOXI-A 10115.M
 Title :

Signal : EIC Ion 371.00 (370.70 to 371.70): 02201001.D\data.ms

peak #	R.T. min	first scan	max scan	last scan	PK TY	peak height	corr. area	corr. % max.	% of total
1	3.935	21	28	37	PV 2	25305	332947	100.00%	100.000%

Sum of corrected areas: 332947

Signal : EIC Ion 473.00 (472.70 to 473.70): 02201001.D\data.ms

peak #	R.T. min	first scan	max scan	last scan	PK TY	peak height	corr. area	corr. % max.	% of total
1	3.938	19	29	37	BV 2	4216	56411	15.11%	13.126%
2	5.228	256	269	289	BB	17754	373348	100.00%	86.874%

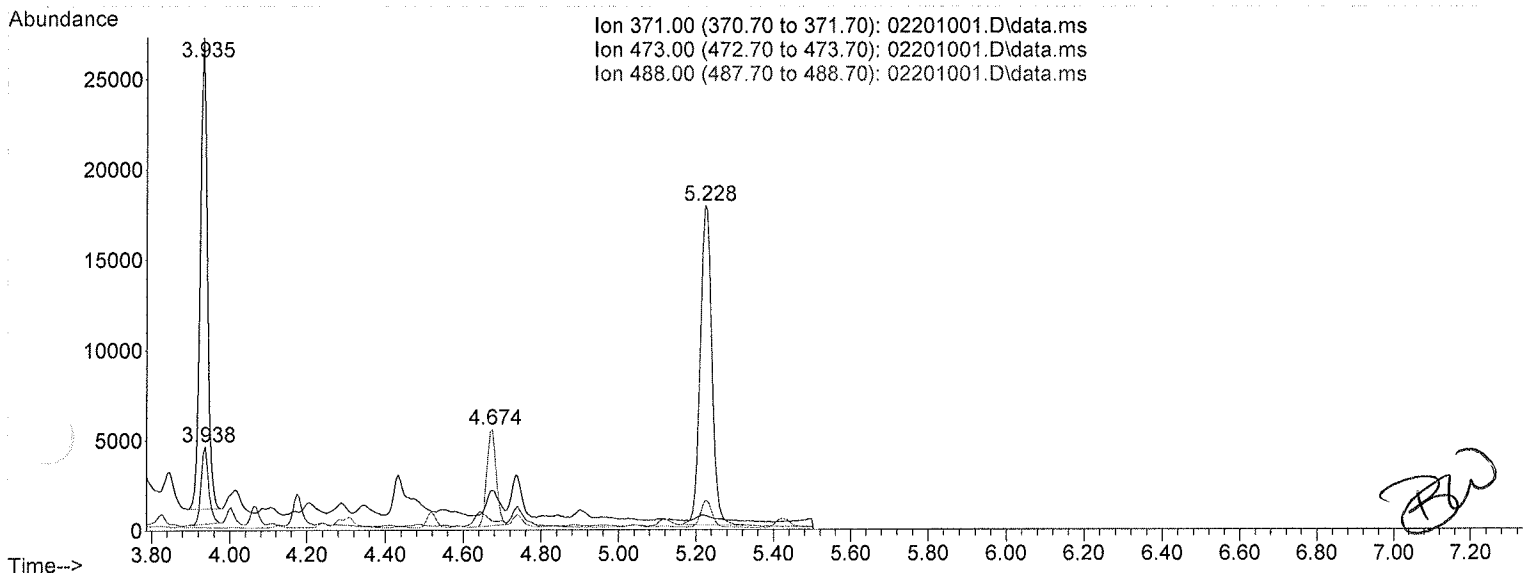
Sum of corrected areas: 429759

Signal : EIC Ion 488.00 (487.70 to 488.70): 02201001.D\data.ms

peak #	R.T. min	first scan	max scan	last scan	PK TY	peak height	corr. area	corr. % max.	% of total
1	4.674	158	166	174	BV	5352	89598	100.00%	100.000%

Sum of corrected areas: 89598

TOXI-A 10115.M Wed Jan 18 13:06:52 2017



Area Percent Report

Data Path : D:\DATA\2017\1-18-17 cTHC\
Data File : 02101018.D
Acq On : 18 Jan 2017 15:19
Operator : Instrument 65198 - Tox
Sample : positive control
Misc : FE042312-01 in neg lot 121616; am 3
ALS Vial : 21 Sample Multiplier: 1

Integration Parameters: autoint1.e
Integrator: ChemStation

Method : D:\DATA\2016\852016a ta\psilocyn .D\TOXI-A 10115.M
Title :

Signal : EIC Ion 371.00 (370.70 to 371.70): 02101018.D\data.ms

peak #	R.T. min	first scan	max scan	last scan	PK TY	peak height	corr. area	corr. % max.	% of total
1	3.903	16	23	31	PV	32957	426513	3.64%	3.515%
2	4.697	162	170	196	PV	699937	11707383	100.00%	96.485%

Sum of corrected areas: 12133897

Signal : EIC Ion 473.00 (472.70 to 473.70): 02101018.D\data.ms

peak #	R.T. min	first scan	max scan	last scan	PK TY	peak height	corr. area	corr. % max.	% of total
1	3.906	19	23	31	VV	5242	74184	1.30%	1.216%
2	4.699	161	171	204	PV	336642	5717247	100.00%	93.709%
3	5.179	239	260	286	BB 2	13799	309658	5.42%	5.075%

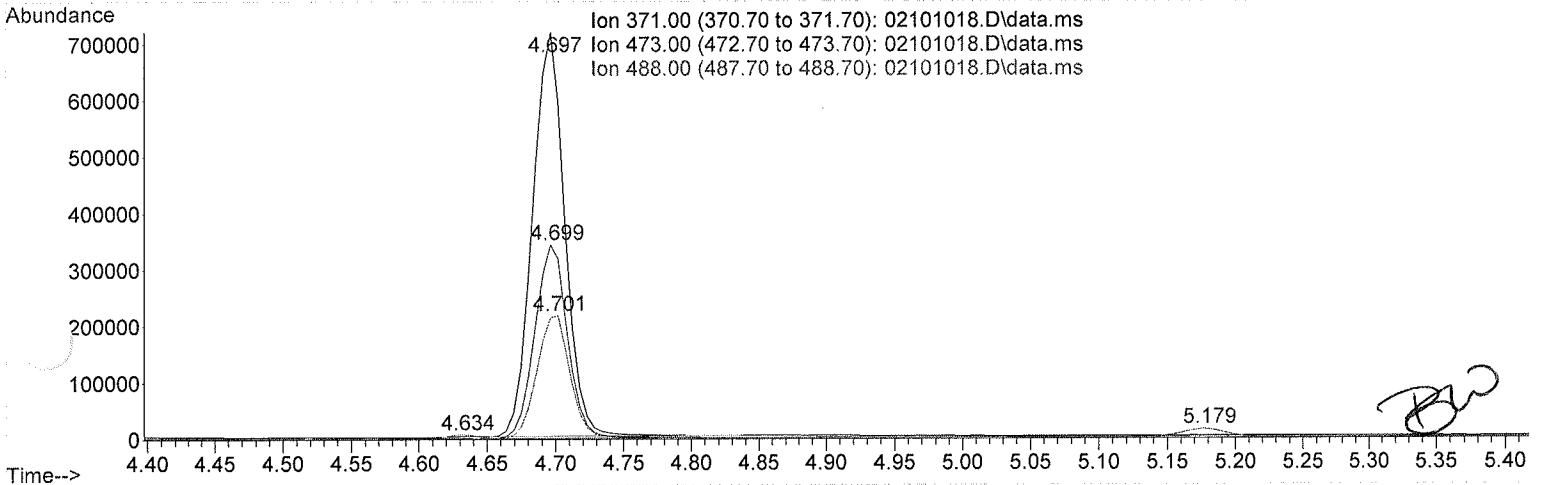
Sum of corrected areas: 6101089

Signal : EIC Ion 488.00 (487.70 to 488.70): 02101018.D\data.ms

peak #	R.T. min	first scan	max scan	last scan	PK TY	peak height	corr. area	corr. % max.	% of total
1	4.634	146	158	163	BV 2	6452	106223	2.87%	2.792%
2	4.701	163	171	206	VB	218023	3697877	100.00%	97.208%

Sum of corrected areas: 3804099

TOXI-A 10115.M Wed Jan 18 15:26:45 2017



Area Percent Report

Data Path : D:\DATA\2017\1-18-17 cTHC\
 Data File : 02101002.D
 Acq On : 18 Jan 2017 12:50
 Operator : Instrument 65198 - Tox
 Sample : positive control
 Misc : FE042312-01 in neg lot 121616; am 3
 ALS Vial : 21 Sample Multiplier: 1

Integration Parameters: autoint1.e
 Integrator: ChemStation

Method : D:\DATA\2016\852016a ta\psilocyn .D\TOXI-A 10115.M
 Title :

Signal : EIC Ion 371.00 (370.70 to 371.70): 02101002.D\data.ms

peak #	R.T. min	first scan	max scan	last scan	PK TY	peak height	corr. area	corr. % max.	% of total
1	3.910	17	24	32	PV	21757	298265	2.41%	2.357%
2	4.709	164	172	199	VV	695144	<u>12354758</u>	100.00%	97.643%

Sum of corrected areas: 12653022

Signal : EIC Ion 473.00 (472.70 to 473.70): 02101002.D\data.ms

peak #	R.T. min	first scan	max scan	last scan	PK TY	peak height	corr. area	corr. % max.	% of total
1	3.913	14	24	32	BV	5312	69917	1.15%	1.037%
2	4.151	59	69	77	BB	2573	37593	0.62%	0.558%
3	4.710	162	173	204	BV	343539	<u>6069674</u>	100.00%	90.025%
4	5.194	249	263	284	BB	28075	565045	9.31%	8.381%

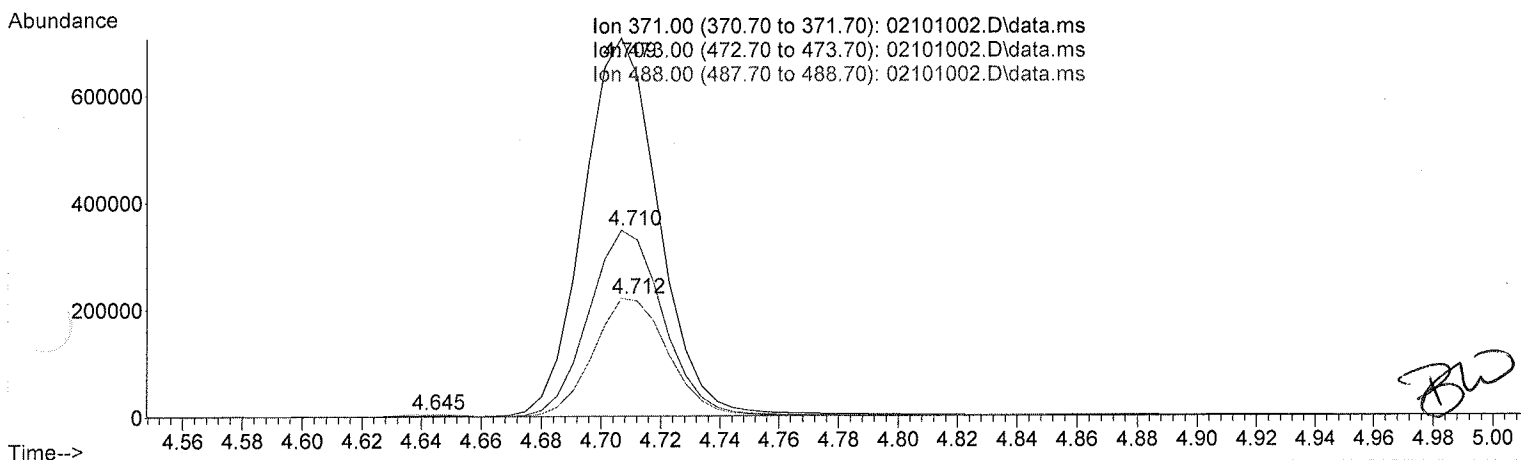
Sum of corrected areas: 6742230

Signal : EIC Ion 488.00 (487.70 to 488.70): 02101002.D\data.ms

peak #	R.T. min	first scan	max scan	last scan	PK TY	peak height	corr. area	corr. % max.	% of total
1	4.645	152	160	165	BV	4745	77553	1.99%	1.955%
2	4.712	165	173	206	VB	220772	<u>3888863</u>	100.00%	98.045%

Sum of corrected areas: 3966416

TOXI-A 10115.M Wed Jan 18 13:06:37 2017



Area Percent Report

Data Path : D:\DATA\2017\1-18-17 cTHC\
 Data File : 02301003.D
 Acq On : 18 Jan 2017 12:59
 Operator : Instrument 65198 - Tox
 Sample : brc3 control
 Misc : lot 68430; am 2.4.4
 ALS Vial : 23 Sample Multiplier: 1

Integration Parameters: autoint1.e
 Integrator: ChemStation

Method : D:\DATA\2016\852016a ta\psilocyn .D\TOXI-A 10115.M
 Title :

Signal : EIC Ion 371.00 (370.70 to 371.70): 02301003.D\data.ms

peak #	R.T. min	first scan	max scan	last scan	PK TY	peak height	corr. area	corr. % max.	% of total
1	3.906	10	23	31	BV	8840	131501	12.37%	10.329%
2	4.700	149	171	195	BB	57563	<u>1063268</u>	100.00%	83.513%
3	4.919	199	211	220	BB	4245	78409	7.37%	6.159%

Sum of corrected areas: 1273178

Signal : EIC Ion 473.00 (472.70 to 473.70): 02301003.D\data.ms

peak #	R.T. min	first scan	max scan	last scan	PK TY	peak height	corr. area	corr. % max.	% of total
1	4.702	163	171	194	VB	28000	<u>555454</u>	100.00%	49.856%
^	4.920	203	212	221	BB	3258	61346	11.04%	5.506%
)	5.187	236	261	277	PB	23772	497324	89.53%	44.638%

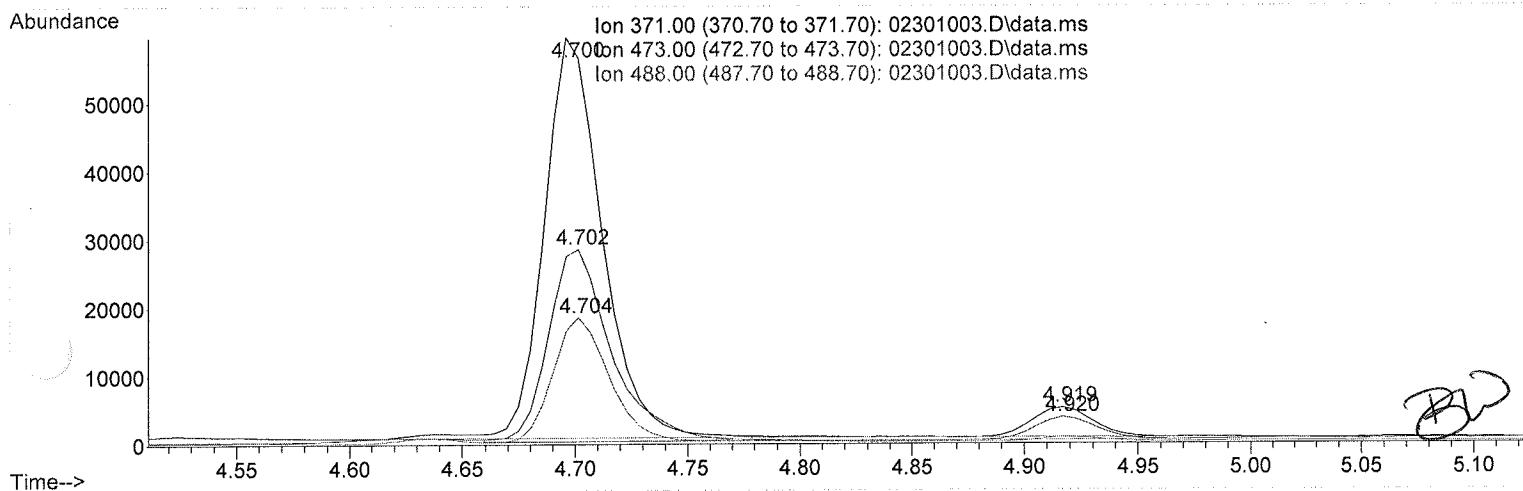
Sum of corrected areas: 1114123

Signal : EIC Ion 488.00 (487.70 to 488.70): 02301003.D\data.ms

peak #	R.T. min	first scan	max scan	last scan	PK TY	peak height	corr. area	corr. % max.	% of total
1	4.704	164	171	182	VV	17784	<u>314066</u>	100.00%	100.000%

Sum of corrected areas: 314066

TOXI-A 10115.M Wed Jan 18 13:07:26 2017



2.4.4 Carboxy-THC QC Calculations

Run Date: 1/18/2017

Case Calculations:

Lab Case #: BRC3-68430

EIC Ion 371 Corr. Area:	<u>1063268</u>	
EIC Ion 473 Corr. Area:	<u>555454</u>	473:371 Ratio: 0.522
EIC Ion 488 Corr. Area:	<u>314066</u>	488:371 Ratio: 0.295

Quality Control Calculations:

Retention Time acceptable range: 4.609 to 4.797

	<i>1st ctrl</i>	<i>2nd ctrl</i>
EIC Ion 371 Corr. Area:	<u>11707383</u>	<u>12354758</u>
EIC Ion 473 Corr. Area:	<u>5717247</u>	<u>6069674</u>
EIC Ion 488 Corr. Area:	<u>3697877</u>	<u>3888863</u>

Approximate minimum corrected area of 371 ion: ~ **2341477**

	Ratio of 473:371			
<i>1st ctrl</i>	<u>0.488</u>	<i>2nd ctrl</i>	<u>0.491</u>	avg. 0.490

Accepted Range
(+/- 20%) 0.392 - 0.588

	Ratio of 488:371			
<i>1st ctrl</i>	<u>0.316</u>	<i>2nd ctrl</i>	<u>0.315</u>	avg. 0.315

Accepted Range
(+/- 20%) 0.252 - 0.378

Carboxy-calculation sheet
Revision 0 effective date 10/23/13
Issuing authority: Quality Manager